

# Evaluation Form

# 2018

**Town of Hanna,  
Alberta**



## 2018 Evaluation Form

# 2018 Evaluation Form



Community: Town of Hanna

Province: Alberta

Category: Population 1,501 – 5,000

Tidiness	127.00	/	150.00
Environmental Action	126.50	/	150.00
Heritage Conservation	128.50	/	150.00
Urban Forestry	149.00	/	175.00
Landscape	172.00	/	200.00
Floral Displays	154.00	/	175.00
Total	857.00	/	1000.00

Percentage : 85.70%

Bloom rating: 5 Blooms - Bronze

Bloom rating: Up to 55%: 1 bloom. 56% to 63%: 2 blooms. 64% to 72%: 3 blooms. 73% to 81%: 4 blooms. >82%: 5 blooms.

National and International Edition, for evaluated communities only.

82 to 83.9%: 5 Blooms. 84 to 86.9%: 5 Blooms (Bronze). 87 to 89.9%: 5 Blooms (Silver). 90% and over: 5 Blooms Gold

Mention: Increased Emphasis on Trees

## Representative (s) of Community

Name: <u>Jason Smith</u>	Function: <u>CiB Chairperson</u>
Name: <u>Gwen Snell</u>	Function: <u>Director of Community Services</u>
Name: <u>Chris Warwick</u>	Function: <u>Mayor of Hanna</u>

## Judges

Name: <u>Gaétan Deschênes</u>	Name: <u>Lorna McIlroy</u>
-------------------------------	----------------------------

## Evaluation

date: 23 – July - 2018

# 2018 Evaluation Form

## IMPORTANT NOTES:

Evaluation is adjusted to the climate and environmental conditions of the community.

Some aspects of the evaluation might not be applicable: scoring will be prorated.

The score will vary from the previous year based on the facts that the evaluation form is subject to modifications each year and that the scores are based on the perception of the current judges.

## SECTORS OF EVALUATION

### Municipal:

- Municipal properties, parks and green spaces, streets, streetscapes
- Properties owned and run by municipality such as museums, historical sites

### Business and Institutions:

Properties owned and managed by

- **Business:** commercial sector, shopping centres, commercial streets, industrial parks, manufacturing plants
- **Institutions:** schools, universities, churches, hospitals, service and community organization buildings (such as YMCA, Legion), private museums, Government and Crown Corporations buildings (such as Canada Post, provincial and federal parks, etc.)
- **Tourism bureaus and Chamber of Commerce offices**
- **Farms:** in rural communities, farms can be considered in this section

### Residential:

- Citizens and citizen groups acting within their own properties
- Residential property owners, rate payer groups

### Community Involvement:

The principle of community involvement is so fundamental to the program that it is considered in each segment of the evaluation.

- Individuals, community organizations, citizen groups (includes youth programs) – all contributing to various aspects of community improvement, including municipal spaces maintained through the efforts of volunteers and community
- Organized clubs such as horticultural societies, garden clubs, community associations, school groups
- Service clubs such as Rotary, Lions, Optimist
- Participation (financial and/or in-kind or employee participation) by the municipality, businesses and institutions.

## 2018 Evaluation Form

### GENERAL COMMENTS AND SUGGESTIONS

Thank you so much for being part of the Communities in Bloom family for the past fourteen years with this being your fourth year at the National level. Over the years, you have progressed every year because you have carefully considered the judges' suggestions and tried all that were feasible. This has resulted in Special Mentions for Heritage, Landscape, Floral, and Community Involvement. For this year, your Special Mention is in the area of Urban Forestry because you have made it a priority.

Congratulations on retaining your 5 Blooms Bronze and being the winner in the 1,501 – 5,000 population category. We will look forward to seeing your future participation, perhaps in the International competition and your progress towards 5 Blooms - Silver and 5 Blooms - Gold.

Located at the junction of highways 9 and 36, Hanna has smoothly evolved from a railway centre to an agricultural centre and from there to oil, gas and coal with a coal-powered electricity generating station. Now that the years are numbered for coal, Hanna has the potential to evolve into a real tourist destination with the return to a Railway theme. Hanna has much to offer to visitors. The Museum is exceptional. Natural heritage abounds. Fox Lake Park beckons. The professionally designed Golf course is popular and the Yesteryear Jamboree and Indoor Pro Rodeo entertain. The CN Roundhouse is ready and waiting for financial investment. The positive proactive approach taken by the Town of Hanna is illustrated by their signage. Negatives are avoided and as a bonus, the CiB logo is used!



Your Community Profile is compact, colourful and well organized and pertinent supporting documents were provided. We enjoyed the school visit and feel that their program should be better promoted both, locally and provincially. Blooms to You! continues to be popular and Winter Blooms brightens December. Also we discovered that, in Hanna, even the pies 'Bloom'!

We would like to thank you for your generous hospitality and we particularly appreciated the many kilometers that you drove to pick us up and take us towards the next community. We sincerely hope that it was 'Worth the Drive'! We will look forward to seeing you at future CiB events.

Thanking you,  
*Gaétan & Lorna*

## 2018 Evaluation Form

<b>TIDINESS</b>		
<p>Tidiness includes an overall tidiness effort by the municipality, businesses, institutions and the residents throughout the community. Elements for evaluation are parks and green spaces, medians, boulevards, sidewalks, streets; municipal, commercial, institutional and residential properties; ditches, road shoulders, vacant lots, signs and buildings; weed control, litter clean-up (including cigarette butts and gum), graffiti prevention/removal and vandalism deterrent programs.</p>		
	<b>Max</b>	<b>Actual</b>
<b>Municipal</b>		
<b>Overall Impressions</b> Tidiness, order, cleanliness and first impressions	10	8.5
<b>Anti-litter</b> Community anti-litter awareness programs	10	8.5
<b>Regulations</b> Effective bylaws, programs and policies and enforcement; litter control, unsightly private property maintenance by-laws, graffiti prevention and eradication, graffiti removal kits to residents	10	8.5
<b>Cleanliness</b> Of public green infrastructure: parks, streetscapes (sidewalks, planters, urban signage and furniture such as benches, litter and recycling containers etc.)	15	13
<b>Municipal Properties Appearance</b> Visual appeal and condition of municipal buildings and properties (including city hall grounds),	15	13.5
<b>Business &amp; Institutions</b>		
<b>Overall Impressions</b> Tidiness, order and cleanliness and first impressions	15	12.5
<b>Site Conditions</b> Condition of buildings (exterior maintenance), grounds, sidewalks and parking lots	15	12.5
<b>Furniture Appearance</b> Condition of urban furniture: benches, litter and recycling containers	5	4.25
<b>Residential</b>		
<b>Overall Impressions</b> Tidiness, order and cleanliness	20	16.25
<b>Property Conditions</b> Condition of buildings, grounds and yards	15	12.5
<b>Community Involvement</b>		
<b>Public Participation</b> In community, neighbourhood or individual street tidiness, clean-up programs, activities and annual maintenance (including promotion, organization, innovations involving youth and seniors, etc.)	10	8.5
<b>Community Support</b> Financial and/or in-kind or participation by the municipality, businesses and institutions for community clean-up programs	10	8.5
<b>Tidiness Total</b>	<b>150.00</b>	<b>127.00</b>

# 2018 Evaluation Form

## TIDINESS

### Observations:

Bylaws have been updated to deal with unsightly properties. The local economic situation has resulted in some absentee property owners and bank-owned properties but the Town has taken a positive proactive approach. The Town has a link for the bylaw complaint form for reporting unsightly properties.

The street sweeper cleans every street and avenue in town in the spring after the snow melts and again during the summer if needed.

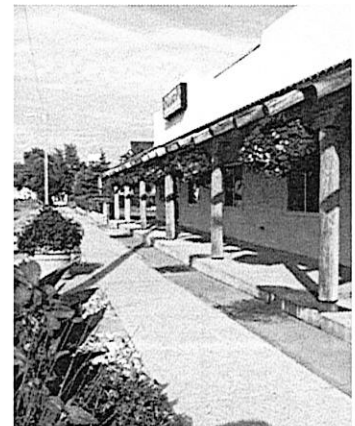
The Town's Demolition Incentive Policy assists both residential and business property owners. Tidiness is further enhanced by an annual sidewalk repair and replacement program as well as road pavement repair. Spring repair to streets includes remediation of potholes and cracks.

Public parking lots are neat with lines repainted each spring. Crosswalks are also repainted each spring along with parking lines.

Walking trails are regularly groomed. The Town and the residents work together to keep boulevards attractive and tidy. The Town worked with the Minor Ball and Minor Soccer groups to clean up the ball diamonds and soccer field at the end of April.

Benches and litter/recycling containers that require painting are listed in early spring. Graffiti appears to be well managed.

The Town Office building appears to set the standard for tidiness with its immaculate façade and landscaping.



Additional waste receptacles and dog waste bags have been added.

The Hanna Cemetery is neat as a result of the concrete foundation provided for the placement of monuments, plants or markers and the Town will remove concrete covers or cribbing at no cost and seed the area to grass to provide a neater appearance.

Hanna Legion is looking great after a paint job courtesy of Atco Power and the Town.

Project Hanna and the Storefront Improvement Incentive Program enables enhancement of storefronts through painting and maintenance thus giving Hanna a tidy image.

In Hanna, everyone from students to Town Council to businesses to sports teams stepped up to 'Pitch In' this spring.

## 2018 Evaluation Form

### Recommendations:

A controlled spray program copes with noxious weeds on town property. However, Creeping bellflower, Common tansy and Himalayan impatiens appear on private properties. We would recommend more public education and even incentives, such as plant replacement programs to control these.

Nuisance weeds are evident in some sidewalks. Pulling larger weeds is effective or a vinegar solution could be sprayed. Some communities have had success spraying with 1 gal vinegar, 2 cups Epsom salts and 1 cup dish detergent.

Bench areas such as those in Memorial Park could benefit from litter containers.

Some benches could be refreshed.

Walkers on the well-groomed walking trails might appreciate strategically placed litter/recycle bins.



## 2018 Evaluation Form

## 2018 Evaluation Form

ENVIRONMENTAL ACTION		
Environmental action pertains to the impact of human activities on the environment and the subsequent efforts and achievements of the community with respect to: policies, by-laws, programs and best practices for waste reduction and landfill diversion, composting sites, landfill sites, hazardous waste collections, water conservation, energy conservation, and environmental stewardship activities under the guiding principles of sustainable development pertaining to green spaces.		
	Max	Actual
<b>Municipal</b>		
<b><u>Sustainable Development Strategies</u></b> Policies, programs, guidelines, long-term planning/vision; effective bylaws/policies and their enforcement; and public education programs and activities	20	17
<b><u>Waste Reduction</u></b> Reduction of waste going to landfill and results (3-R: reduce, reuse and recycle), municipal composting programs, including activities such as composting sites, yard waste collections, mulching of wood debris (Christmas trees, hedge trimmings, etc.) & reclamation of cut trees. Handling of hazardous waste including e-waste collection and reuse of compost material.	20	17
<b><u>Water Conservation</u></b> Use-reduction programs such as promotions, efficient irrigation, use of non-potable water, water restriction policies	15	12.75
<b><u>Energy Conservation</u></b> Programs such as alternate forms of energy (ex. geothermal, biomass, wind, solar) and initiatives such as: energy-efficient appliances, shielding for night skies, efficient street lighting	15	12.5
<b><u>Environmental Initiatives, Innovations and Actions</u></b> <ul style="list-style-type: none"> <li>- Development and expansion of sustainable mobility and active transportation network such as bike lanes and multi-used pathways;</li> <li>- Horticultural practices such as green roofs, green walls, green lanes, living fences, buffer zones; re-use of sites; engineered wetlands, bio-swales, permeable surfaces and rain water management</li> <li>- Brownfield redevelopment, remediation, land reclamation</li> <li>- Air quality programs such as anti-idling, reduction of greenhouse gas emission (carbon reduction).</li> </ul>	10	8
<b>Business &amp; Institutions</b>		
<b><u>Participation in The Environmental Effort</u></b> Waste management (reduce, reuse and recycle), water conservation, energy conservation, brownfield management	10	8.5
<b><u>Corporate Environmental Action</u></b> Innovation/stewardship, initiatives, activities (for example: environmental clean-up activities)	10	8
<b>Residential</b>		
<b><u>Participation in Environmental Initiatives</u></b> 3-R (reduce, reuse and recycle), composting	10	8.5
<b><u>Water Conservation</u></b> Practices such as water use reduction, rainwater collection and rain gardens	15	13
<b>Community Involvement</b>		
<b><u>Public Participation – Civil Action</u></b> Participation in public forums and policy development on environmental issues	5	4.25
<b><u>Public Participation in Activities</u></b> Community (including children/youth), neighbourhood or individual street environmental activities and programs (including promotion, organization and evidence of taking ownership, etc.)	10	8.5
<b><u>Community Support</u></b> Financial and/or in-kind or participation by the municipality, businesses and institutions in public environmental activities and programs	10	8.5
<b>Environmental Action Total</b>	<b>150.00</b>	<b>126.50</b>

# 2018 Evaluation Form

## ENVIRONMENTAL ACTION

### Observations:

Big Country Waste Management has improved their operation of the Hanna Landfill site with disposal options clearly posted.

The Henry Kroeger Water Commission supplies the water and the Town is reviewing their use of water on green spaces in addition to using timed irrigation.

Solar power is also utilized for efficient irrigation.



The town has been gradually changing streetlights and facility lights over to LED options.

Businesses have access to waste management and recycling of cardboard and newspapers. A mobile paper shredding service is well utilized.

The gazebo recently added by the Lions Club features energy efficient lighting.

The use of rain barrels is encouraged along with low-use water options. The Weekender hanging baskets that promote water conservation are sold by Hanna in Bloom to local businesses and residents.

Re-use and recycling are popular in Hanna with the Ladies Hospital Auxiliary Rummage Sales held in spring and fall which raise close to \$50,000 per year for the local hospital. Additionally, the United church operates a Thrift Store year-round.

### Recommendations:

We suggest that you add recycle containers (or racks) for bottles and cans, beside your garbage cans in main areas.

Mulching has worked well for the Town. We encourage you to continue promoting the practice to businesses, institutions and residents in order to reduce water consumption.

More use of rain barrels could also reduce the expense of water consumption.

We encourage you to continue to work with local grocery stores on the promotion of reusable bags.

Hanna in Bloom is considering an incentive of five dollars off for a tree watering bag purchased in conjunction with a tree. We urge you to work out the details for implementing this in 2019.

## 2018 Evaluation Form

HERITAGE CONSERVATION		
<p>Heritage conservation includes efforts to preserve natural and cultural heritage within the community. Preservation of natural heritage pertains to policies, plans and actions concerning all elements of biodiversity including flora and fauna ecosystems and associated geological structures and formations. Cultural conservation refers to the heritage that helps define the community including the legacy of tangible (built/hard assets) elements such as heritage buildings, monuments, memorials, cemeteries, artifacts, museums and intangible elements such as traditions, customs, festivals and celebrations. The participation of groups such as historical societies and conservation groups is considered.</p>		
	Max	Actual
<b>Municipal</b>		
<b>Natural Heritage Strategic Plans</b> Policies, by-laws and their enforcement and effective programs	10	8
<b>Natural Heritage Management Plans</b> Management and preservation initiatives: including eco systems, eco parks, protection of sensitive habitats, species at risk, support for at risk pollinators, grasslands, naturalization, wetlands, urban agriculture/farming, and wildlife	15	13
<b>Natural Heritage Promotion</b> Management and promotion of natural heritage (through communications, information and support programs, economic development/tourism) including activities and programs (year-round) for education and use of natural heritage sites for and by the public	15	13
<b>Cultural Heritage Strategic Plans</b> Policies, by-laws and plans and preservation initiatives for heritage buildings, cemeteries, artefacts, museums, monuments, heritage trees and gardens, including their integration with streetscapes and landscape	15	13
<b>Cultural Heritage Activities</b> Initiatives throughout the year including festivals and celebrations along with preservation of traditions and customs	10	8.5
<b>Business &amp; Institutions</b>		
<b>Natural Heritage Assets</b> Conservation, restoration and integration of natural heritage, including eco parks, conservation areas, heritage gardens, trees and landscapes.	15	13
<b>Cultural Heritage Assets</b> Conservation, restoration and reuse of heritage buildings and artefacts including their integration with the built/hard?, streetscapes and green landscapes	10	8.5
<b>Residential</b>		
<b>Cultural Heritage Initiatives</b> Conservation/restoration and reuse of heritage buildings, artefacts on residential lands	10	8
<b>Community Involvement</b>		
<b>Natural Heritage Public Participation</b> Participation in community (including children/youth), neighbourhood or individual natural heritage programs including developing policies and plans, site improvements and management, conservation and education initiatives	15	13
<b>Natural Heritage – Community Support</b> Financial and/or in-kind or participation by the municipality, businesses and institutions (including environmental groups) in community-initiated natural heritage activities and programs	15	13
<b>Cultural Heritage - Public Participation</b> Participation in community (including children/youth), neighbourhood or individual cultural heritage programs including year-round heritage community events/activities, festivals and celebrations along with preservation of traditions and customs	10	8.75
<b>Cultural Heritage - Community Support</b> Financial and/or in-kind or participation by the municipality, businesses and institutions (including historical societies) in community-initiated cultural heritage activities and programs.	10	8.75
<b>Heritage Conservation Total</b>	<b>150.00</b>	<b>128.50</b>

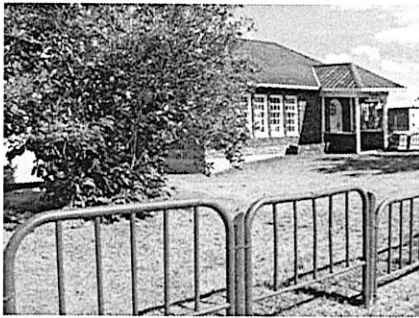
## 2018 Evaluation Form

### HERITAGE CONSERVATION

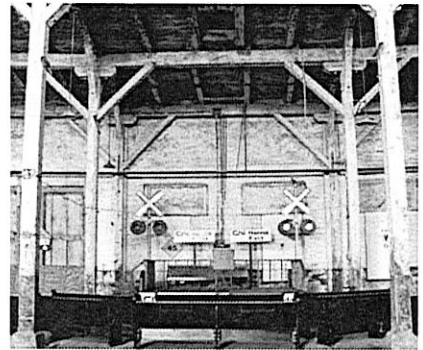
#### Observations:

Antelope Hill Provincial Park, six miles north of Hanna, is a precious piece of natural heritage with prairie grasses on a property donated by Gottlob Schmidt.

Hanna has an incredibly rich inventory of birds. Paulette Murray's 2018 calendar features photos of 50 of over 100 different birds spotted in Hanna in 2017. Fox Lake Park is home to 28 bluebird boxes and Hanna is home to one of the major flyways for the Canada Goose migration.



Hanna has cleverly incorporated heritage into their hard landscape features. The locally built fountain features heritage and the Shadow sculpture cleverly projects heritage scenes. The Museum operated by the Heritage and District Historical Society has operated for half a century and it is showing new energy and growth with over 20 buildings



full of artifacts. The life-size centennial heritage posters add interest to their locations. Their eye-catching fence is made from bedsteads from the old National Hotel. The former railway station is home to the Visitor Information Centre and the model train construction of the local Model Train Group. The CN Roundhouse site has been cleaned up and has received Provincial Historical designation. It is a real treasure for the community although future plans will prove costly.

The 2012 booklet, Railroad History Hanna by Sandra Beaudoin is an amazing collection of railroad history.

Other historical buildings are few but generally well maintained and integrated with the streetscape. There are some well-kept heritage homes.

This year's Taste of Culture added the Philippine community to their former Japanese and Canadian celebration of food tasting, dance and other entertainment; with great success. Hanna has an active student exchange with Wake, Japan.

## 2018 Evaluation Form

### **Recommendations:**

The train theme and the Museum could make Hanna a great 'Destination' stop in the future. We would encourage a stronger bond between the Town and the Historical Society to ensure continuity and promotion.

The Roundhouse has great potential for the Town of Hanna's tourism future. CN Archives may be a helpful source. We wish them success with their proposed high school project to replace windows.

The model train construction appears to be slowing down. Is there a way to support and encourage the Model Train Group? It is a worthy attraction even during construction.

We suggest that you identify and promote your Heritage Trees. Your new Tree Inventory must have identified some.

Your Taste of Culture was an excellent community-building event. The addition of the Philippine component worked wonderfully. Consider adding one new nation each year.

## 2018 Evaluation Form

## 2018 Evaluation Form

URBAN FORESTRY		
Urban forestry includes the efforts of the municipality, businesses, institutions and residents with regards to written policies, by-laws, standards for tree management (selection, planting, and maintenance), long and short-term management plans, tree replacement policies, pollinator-friendly tree selection, tree inventory, and Integrated Pest Management (IPM), heritage, memorial and commemorative trees.		
	Max	Actual
<b>Municipal</b>		
<b>Overall Impression</b> Overall impact, benefit and first impression of the urban forest	10	8.25
<b>Strategic Plans</b> Policies, regulations and tree by-laws, tree protection and planting on public and private lands	15	13
<b>Urban Forestry Plan</b> Plan, design and inventory management including integration with overall green infrastructure landscape plan, and measures to preserve, protect, manage and expand overall tree inventory, including woodlots	20	17
<b>Plan of Action</b> Procurement, species diversity (including native trees), selection of hardy and pollinator habitat tree species, recommended tree list and tree planting standards.	10	8.5
<b>Integrated Pest Management</b> (IPM) / Plant HealthCare (PHC): plan of action for invasive pest detection and control, information on current infestations and diseases	10	8.25
<b>Public Information Programs</b> Provides information on good planting techniques, best practices and maintenance programs	15	13.5
<b>Maintenance Quality</b> Best practices with demonstrated results	10	8.25
<b>Qualified Resources</b> Qualified personnel (including seasonal staff and/or qualified experienced contractors) and/or in place training programs	5	4.25
<b>Business &amp; Institutions</b>		
<b>Tree inventory</b> Contribution to expanding overall tree inventory, with consideration of design and diversity including native and hardy species of trees, on properties owned by businesses and institutions.	15	13
<b>Maintenance Quality</b> Programs, best practices with demonstrated results: watering, pruning, IPM	10	8.25
<b>Residential</b>		
<b>Tree Planting</b> Contribution to expanding overall tree inventory, with consideration of design and diversity including native and hardy species of trees on residential properties	15	13
<b>Maintenance Quality</b> Best practices with demonstrated results	10	8.25
<b>Community Involvement</b>		
<b>Public Participation</b> Participation (including children/youth) in tree planting and conservation programs such as Green Streets Canada, Arbor Day, Maple Leaf Day, and other tree planting and maintenance programs and activities on public lands (including promotion, organization etc.)	20	17
<b>Community Support</b> Financial and/or in-kind or participation or promotion by the municipality, businesses and institutions for community tree planting and conservation programs on public lands	10	8.5
<b>Urban Forestry Total</b>	<b>175.00</b>	<b>149.00</b>



# 2018 Evaluation Form

## URBAN FORESTRY

### Observations:

This year, the Town of Hanna put increased emphasis on their urban forest. Approval was given to their comprehensive Public Tree Bylaw and their Adopt a Tree Bylaw. The Adopt a Tree Bylaw is well drafted and the donation includes cost of the tree, shipping, planting, mulch and a tree watering bag.

An excellent initiative was the hiring of a summer student to serve as Urban Forestry Assistant to provide a comprehensive and updatable inventory of the Town's trees in order to create a plan and budget for removal and replacement of trees and to decide where to plant new trees. Hanna's urban forest is now showing "Life after Poplars" as a wider variety of trees are being planted, including Bur Oak.



Severe storms in 2012 and 2016 have necessitated replanting of trees in the town. Three special fruit trees have been planted along Fox Lake Trail Boulevard by the Mayor and Council to honour Volunteers: Past, Present and Future. This planting marked the beginning of a Community Orchard of hardy fruit trees and bushes.



Trees planted at the Visitor Information Centre will provide future shade.

Hanna is active with the Dutch Elm Disease monitoring program, placing and monitoring traps each season and obeying the pruning bans. An outbreak of Black knot has resulted in increased public education on tree health.

Atco Electric has been a good partner over the past four years by trimming trees and providing vouchers when removal is necessary.

Flax bales have been used under some maple trees as mulch. It will be interesting to gauge the success of this.

Qualified arborists are hired by the town and parks staff are trained in basic maintenance.

## 2018 Evaluation Form

### **Recommendations:**

Many trees require maintenance pruning. Your new tree inventory will prioritize and facilitate this process.

We feel that you need a robust tree planting program. Your Adopt-a-tree program and your Tree Inventory will help with this.

Consider hardy, faster growing trees (not Poplars!). Plant borderline trees in more protected areas.

Your newly installed benches would benefit from trees planted behind them to provide shade.

We urge you to continue your focus on urban forestry, perhaps with workshops for residents with tree specialists or arborists.

## 2018 Evaluation Form

## 2018 Evaluation Form

LANDSCAPE		
Landscape includes planning, design, construction and maintenance of parks and green spaces suitable for the intended use and location on a year-round basis. Elements for evaluation include: native and introduced materials; balance of plants, materials and constructed elements; appropriate integration of hard surfaces and art elements, use of turf and groundcovers. Landscape design should harmonize the interests of all sectors of the community. Standards of execution and maintenance should demonstrate best practices, including quality of naturalization, use of groundcovers and wildflowers along with turf management.		
	Max	Actual
<b>Municipal</b>		
<b>Gateway Impressions</b> First impressions of the community including gateway/entrance treatments	10	8.25
<b>Sustainable Designs – Soft Landscape</b> Sustainable designs (seasonally adjusted year round): energy efficient, use of green materials, naturalization, xeriscaping, suitable plant varieties (including pollinator friendly) , traffic calming, bank stabilisation	10	8.5
<b>Sustainable Designs - Hard Landscape</b> Urban and civic design standards for streetscape and public places: flags, banners, public art, fountains, site furnishings, signage, seasonal design and décor, walkways and paving materials	10	8.75
<b>Landscape Plan</b> Integrated and implemented throughout the municipality	10	8.5
<b>Turf Management Programs</b> Integrated Pest Management (IPM), Plant Health Care (PHC), alternative solutions to diseases and infestations when appropriate, increased naturalization and adapted maintenance programs	10	8.5
<b>Landscape Maintenance</b> Policies, Standards, Best Practices and Programs	10	8.75
<b>Landscape Quality</b> Landscape maintained to appropriate standards, specs and best practices.	5	4.25
<b>Qualified Resources</b> Qualified personnel (including seasonal staff) and/or in place training programs and/or qualified experienced contractors	10	8.75
<b>Year-round use</b> Demonstrated year-round opportunities and programs for education and use of parks and green spaces (urban agriculture, community gardens, parks and recreation programs)	10	8.75
<b>Business &amp; Institutions</b>		
<b>Sustainable Designs</b> (Seasonally adjusted year-round): energy efficient, use of green materials, naturalization, xeriscaping, alternate groundcovers, urban agriculture	10	8
<b>Integrated Plan</b> Contribution to urban & civic design and public green spaces above requirements: such as public art, streetscape, site furniture, fountains & innovation in concept & design	15	13
<b>Maintenance Quality</b> Adequate ongoing life cycle management (ongoing maintenance, ground & asset management, rehabilitation & replacement) of all landscape elements	10	8
<b>Residential</b>		
<b>Streetscape Appeal</b> Of landscapes (year-round, seasonal, themed)	15	13
<b>Maintenance Quality</b> Lawn care, trees and shrub maintenance (with demonstrated results)	15	13
<b>Plant Selection</b> Selection of plant material (native, local, innovative, edible & pollinator friendly plants)	10	8.5
<b>Community Involvement</b>		
<b>Public Participation</b> in community programs (including children/youth) such as: urban agriculture, community gardens, "yard of the week", volunteer park maintenance, holiday illumination & decoration (promotion, organization, etc.)	20	17.5
<b>Volunteer Recognition</b> Recognition (by municipality and/or volunteer groups) of volunteer efforts in all aspects of the Communities in Bloom program including activities in all evaluated criteria	20	18
<b>Landscape Total</b>	<b>200.00</b>	<b>172.00</b>

## 2018 Evaluation Form

### LANDSCAPE

#### Observations:

Your entrance with the electronic sign and the self-watering container provides a good first impression. A local artist repainted the Hanna signage and the three large geese sculptures have also gained prominence with re-touched paint and suitable landscaping around them.

Public landscaping in Hanna varies from xeriscape to traditional but there is a fairly common theme that is showcased well by the Town Office, utilizing local river rock and gravel. The shadow sculpture at Centennial Place is enhanced with xeriscaping. The Visitor Information Centre takes a more traditional approach with floral displays, turf and trees.

The Water Tower feature is the focal point in Memorial Park.

The gazebo in Hector King Hunter Park, constructed by the Lions Club has been a welcome addition. Goutweed serves a purpose as long as its location allows control.



The murals of the local rock band 'Nickelback' adorn several spaces in Hanna along with other significant murals.

The Angels at the Cemetery add a special touch to a well-groomed area. The gazebo with the map on the wall provides information for visitors and residents.

The Hanna Community Garden continues to thrive both in produce and in community spirit.

The professionally designed, Hanna Golf & Country Club course is a great asset to the town.

Mulching is being used by the Town, businesses and residents and it has proved valuable this year in conserving moisture and controlling weeds.

Just as CiB is about more than Blooms, Hanna's Blooms to You! awards, acknowledge more than just blooms! One residential property and one business property are recognized weekly during the summer for looking well maintained and attractive. The annual Yard and Garden competition organized by the Hanna and District Ag Fair recognizes well landscaped and maintained yards.

Hanna blooms year-round as illuminated decorations brighten the Christmas season. Over the past three years, replacement decorations feature LED lights.

## 2018 Evaluation Form

### Recommendations:



We encourage you to continue to promote your railway theme of 'All Aboard' as you move forward with your landscaping.

In addition to your walking tour, consider a self-guided mural walk with a simple brochure. The Nickelback series could be an important feature of it.

Winkler Park could benefit from more picnic tables.

We might suggest that your baseball park could use a protective bumper at the top of the fence for safety.

We like your new CiB banner and we hope you will be able to update your CiB signage after the 2018 National Awards!

## 2018 Evaluation Form

## 2018 Evaluation Form

FLORAL DISPLAYS		
<p>Floral displays evaluates efforts of the municipality, businesses, institutions and residents to design, plan, execute, and maintain floral displays of high quality standards. Evaluation includes the design and arrangements of flowers and plants (annuals, perennials, bulbs, ornamental grasses, edible plants, water efficient and pollinator friendly plants) in the context of originality, distribution, location, diversity and balance, colour, and harmony This pertains to flowerbeds, carpet bedding, containers, baskets and window boxes.</p>		
	Max	Actual
<b>Municipal</b>		
<b>Floral Display Plan of Action</b> Integration into overall landscape plan and distribution through community. Concept and design including sustainable design	15	13.5
<b>Diversity of Displays</b> Flowerbeds, raised beds, planters, hanging baskets, window boxes, carpet bedding, mosaics	20	17.5
<b>Diversity of Plants</b> Annuals, perennials, bulbs, grasses, woody plants, natural flora, pollinator friendly plants	10	9
<b>Maintenance Quality</b> Maintenance to appropriate specifications and standards, best practices: watering, weeding, edging, dead heading, etc.	20	18.5
<b>Qualified Resources</b> Qualified personnel (including seasonal staff) and/or in place training programs and/or qualified experienced contractors	10	8.75
<b>Business &amp; Institutions</b>		
<b>Design Concept</b> and design (including arrangement, diversity, colour of display and plants) on grounds	15	12.75
<b>Overall Plan</b> Contribution to, and integration with, overall community floral program	10	8.25
<b>Maintenance Quality</b> Of planting and maintenance: watering, weeding, edging, dead heading, etc. with demonstrated results.	10	8.25
<b>Residential</b>		
<b>Concept and Design</b> (including arrangement, diversity, colour of display and plants) on residential properties including Pollinator gardens and/or inclusion of pollinator plants in gardens	20	17.5
<b>Maintenance Quality</b> Of planting and maintenance with demonstrated results.	15	12.50
<b>Community Involvement</b>		
<b>Public Participation</b> In community projects, volunteer initiatives (including children/youth), outreach programs in floral displays (including promotion, organization, etc.)	15	13.75
<b>Community Support</b> Financial and/or in-kind or participation by the municipality, businesses and institutions for community floral displays activities	15	13.75
<b>Floral Displays Total</b>	<b>175.00</b>	<b>154.00</b>

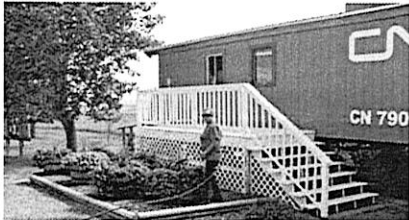


# 2018 Evaluation Form

## FLORAL DISPLAYS

### Observations:

The barrel planters brighten the streets and sidewalks of Hanna.



Businesses add hanging baskets.

The Hanna Lions Club provide floral boxes.

The Visitor Information Centre features an attractive floral display by the caboose.



Increased use of mulch and more maintenance by town staff has lessened the load for volunteers without sacrificing beauty and enjoyment.

The Museum not only has a heritage bed but they plan to install an heirloom or heritage garden in the future.

A pollinator bed has been established at Hector King Hunter Park and 'Bees Matter' seeds and information have been shared. Cosmos and Salvia were identified as good pollinator plants; 200 packets of seed were given out and they have been widely grown this year.

### Recommendations:



Your planters and barrels are attractive but some areas could benefit from more in-ground plantings.

You have made a good start on your pollinator program. We suggest that you continue (and expand) the program.

Tulips, particularly the Canada 150 tulips, have been grown. We suggest more use of daffodils as they are hardy, rebloom for years and are not eaten by animals.

Areas on the main street area might benefit from more color (flowers).

Next year might be a good time to choose a colour theme for your floral displays to provide continuity throughout the town.

## 2018 Evaluation Form



### THANK YOU FOR YOUR INVOLVEMENT

"Within the context of climate change and environmental concerns, communities involved in the Communities in Bloom program can be proud of their efforts, which provide real and meaningful environmental solutions and benefit all of society."

### COMMUNITIES IN BLOOM IS MADE POSSIBLE BY

The commitment of local, provincial and national volunteers

The support of elected officials and of staff in municipalities

The dedication of our judges, staff and organizations

The contributions of our sponsors and partners